



1162 Suncast Lane, Ste #112  
El Dorado Hills, CA 95762

## El Dorado Hills Office Suite For Lease



### PROPERTY HIGHLIGHTS

- Suite #112 +/-1,680 SF *newly renovated & ready for occupancy!*
- Reception, 2 private offices, large bullpen, breakroom & restroom
- Quiet, well maintained building within desirable Quail Park - abundant parking
- Central location, immediate access to EDH Town Center & Highway 50 corridor
- Asking rate \$2.10 PSF Full Service, R&D Zoning supports many uses
- Contact listings team for further information or to arrange a tour

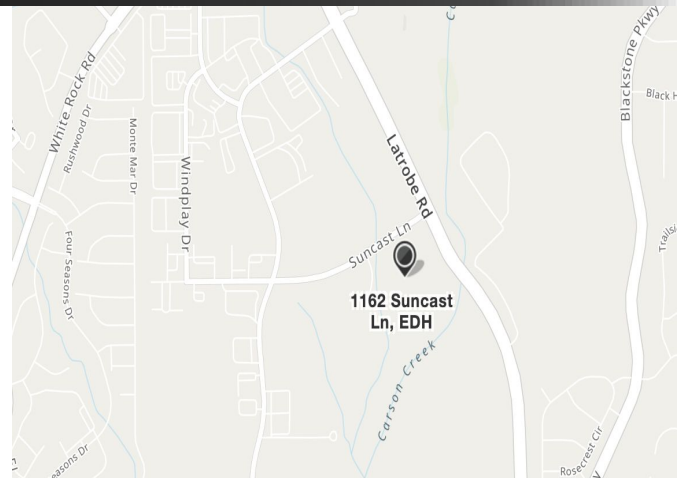
[Drone Footage Link](#)

**BOB KUHL**  
Director, KW Commercial  
Cell: 916.947.5060  
[bob@bobkuhl.com](mailto:bob@bobkuhl.com)  
DRE License #00606862

**DAN WATSON**  
Broker Associate  
Cell: 831.227.7098  
[dan.watson@kw.com](mailto:dan.watson@kw.com)  
DRE License #01786748

**GRETCHEN TOBIN**  
Director, Leasing and Sales  
Cell: (916) 425-7711  
[gretchentobin@kw.com](mailto:gretchentobin@kw.com)  
DRE License #00937965

[www.bobkuhl.com](http://www.bobkuhl.com)

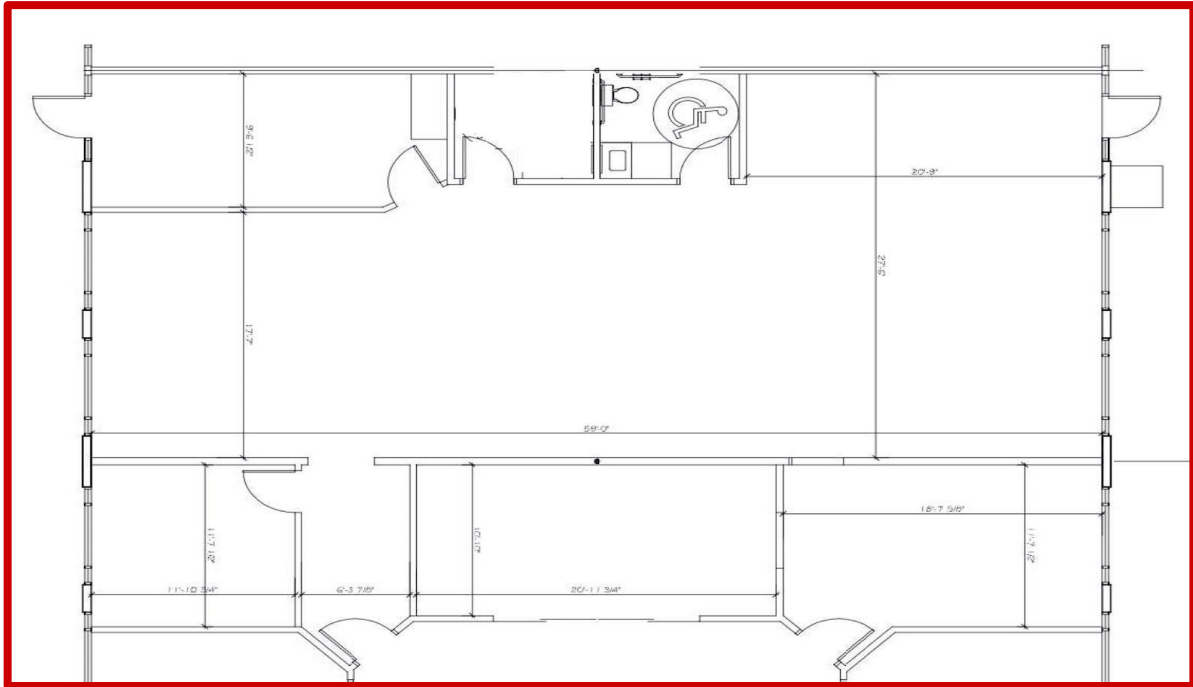


KW Commercial | 548 Gibson Drive, Ste 200 | Roseville, CA 95661 | 916.788.8800 | License #1272617

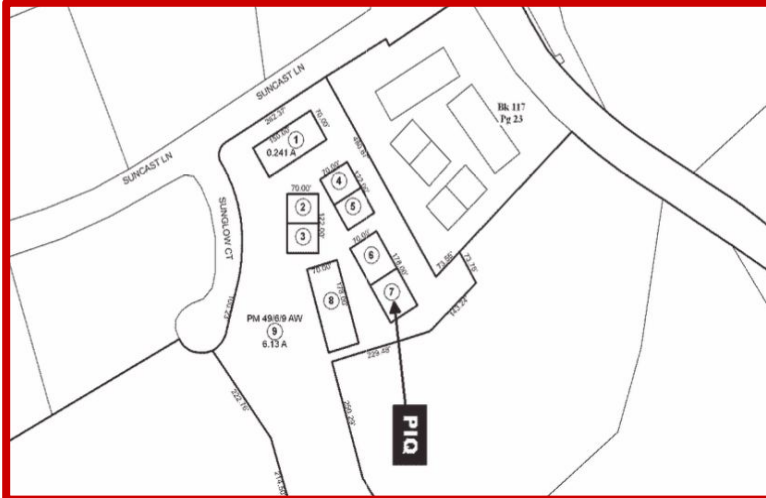
The information contained herein was obtained from third parties, and it has not been independently verified by the real estate brokers. Buyers/tenants should have the experts of their choice inspect the property and information. Real estate brokers are not qualified to act as or select experts with respect to legal, tax, environmental, building construction, soils-drainage or other such matters.



1162 Suncast Lane, Ste #112  
El Dorado Hills, CA



The plan is an approximation and some improvements have changed



For more information, please contact:

**GRETCHEN TOBIN**  
Cell: (916) 425-7711  
[gretchentobin@kw.com](mailto:gretchentobin@kw.com)  
DRE License #00937965

**BOB KUHL**  
Cell: 916.947.5060  
[bob@bobkuhl.com](mailto:bob@bobkuhl.com)  
DRE License #00606862

**DAN WATSON**  
Cell: 831.227.7098  
[dan.watson@kw.com](mailto:dan.watson@kw.com)  
DRE License #01786748

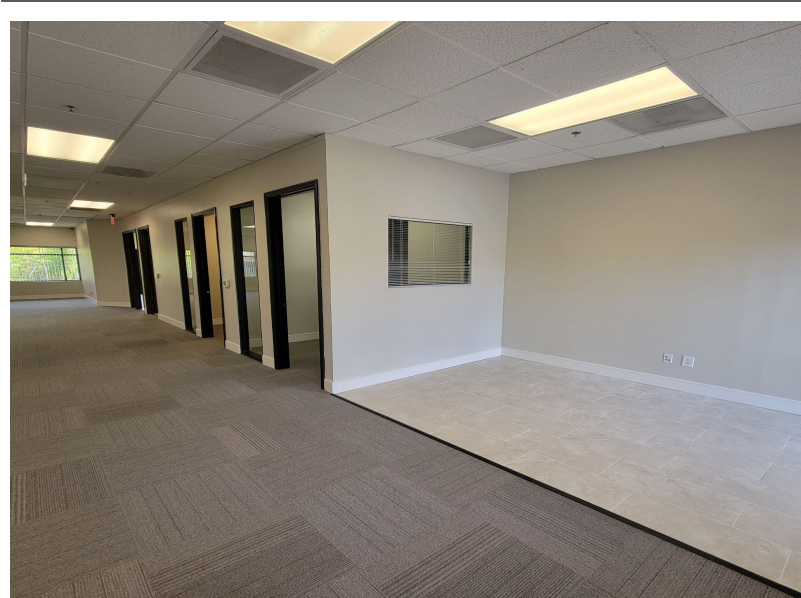
[www.bobkuhl.com](http://www.bobkuhl.com)

KW Commercial | 548 Gibson Drive, Ste 200 | Roseville, CA 95661 | 916.788.8800 | License #1272617

The information contained herein was obtained from third parties, and it has not been independently verified by the real estate brokers. Buyers/tenants should have the experts of their choice inspect the property and information. Real estate brokers are not qualified to act as or select experts with respect to legal, tax, environmental, building construction, soils-drainage or other such matters.

# PROPERTY PHOTOS

1162 Suncast Lane, Ste #112  
El Dorado Hills, CA



For more information or to arrange a tour,  
contact the listing agents:

**BOB KUHL**  
Director, KW Commercial  
Cell: 916.947.5060  
[bob@bobkuhl.com](mailto:bob@bobkuhl.com)  
DRE License # 606862

**DAN WATSON**  
Broker Associate  
Cell: 831.227.7098  
[dan.watson@kw.com](mailto:dan.watson@kw.com)  
DRE License #01786748

**GRETCHEN TOBIN**  
Director, Leasing and Sales  
Cell: (916) 425-7711  
[gretchentobin@kw.com](mailto:gretchentobin@kw.com)  
DRE License #00937965

[www.bobkuhl.com](http://www.bobkuhl.com)



KW Commercial | 548 Gibson Drive, Ste 200 | Roseville, CA 95661 | 916.788.8800 | License #1272617

The information contained herein was obtained from third parties, and it has not been independently verified by the real estate brokers. Buyers/tenants should have the experts of their choice inspect the property and information. Real estate brokers are not qualified to act as or select experts with respect to legal, tax, environmental, building construction, soils-drainage or other such matters.